

DEPARTEMENT DU VAR (83)
COMMUNE DE SAINT-ZACHARIE

PLU DE SAINT ZACHARIE

5 - ANNEXE GRAPHIQUE

Aléa inondation - Etude SCE Nov. 2011

Echelle: 1/2500 ème

AFFAIRE N° 4820013 DATE DEC. 2011 DESSIN C. CHILO VERIFIE LMT

| INDICES | DATES | D | MODIFICATIONS |
|---------|------------|-----|--------------------|
| A | 12-10-2010 | CCO | PREMIERE DIFFUSION |
| B | 29-11-2011 | RCE | MISE A JOUR |
| | | | |
| | | | |

MAITRE D'OUVRAGE:



COMMUNE DE SAINT-ZACHARIE
Mairie de Saint-Zacharie
1 cours Louis Blanc
83640 Saint-Zacharie
Tel : 04 42 32 63 32

MAITRE D'OEUVRE:



DIRECTION REGIONALE MEDITERRANEE
Le Condorcet, 18 Rue Elje Pelas - BP 132
13322 MARSEILLE Cedex 16 - FRANCE
Tél. :33 (0)4 91 17 00 00
Fax : 33 (0)4 91 17 00 12

PLAN N°

5.4

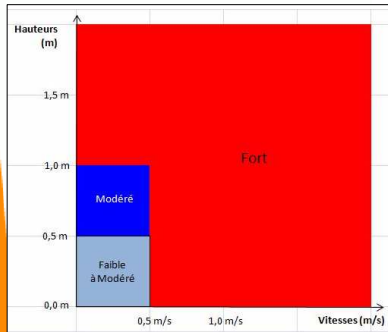
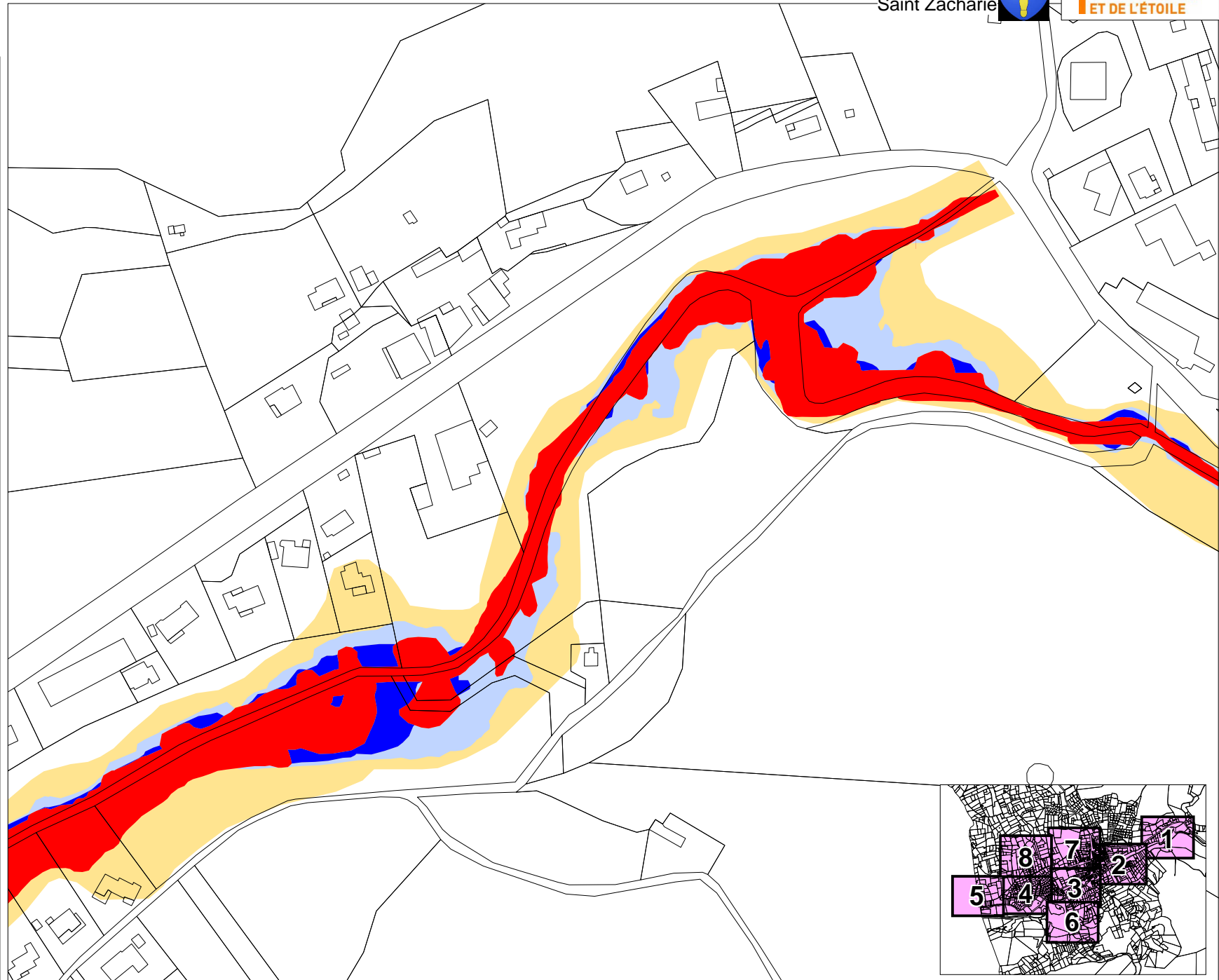
ECH: 1/2500

PLAN LOCAL D'URBANISME

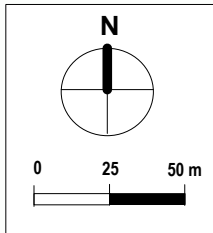
Aléa inondation

Crue centennale

Figure A1



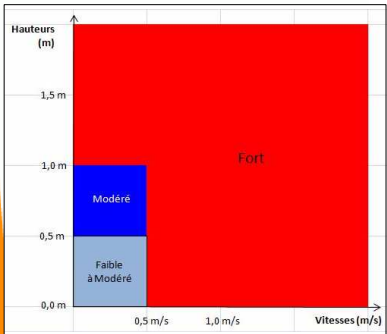
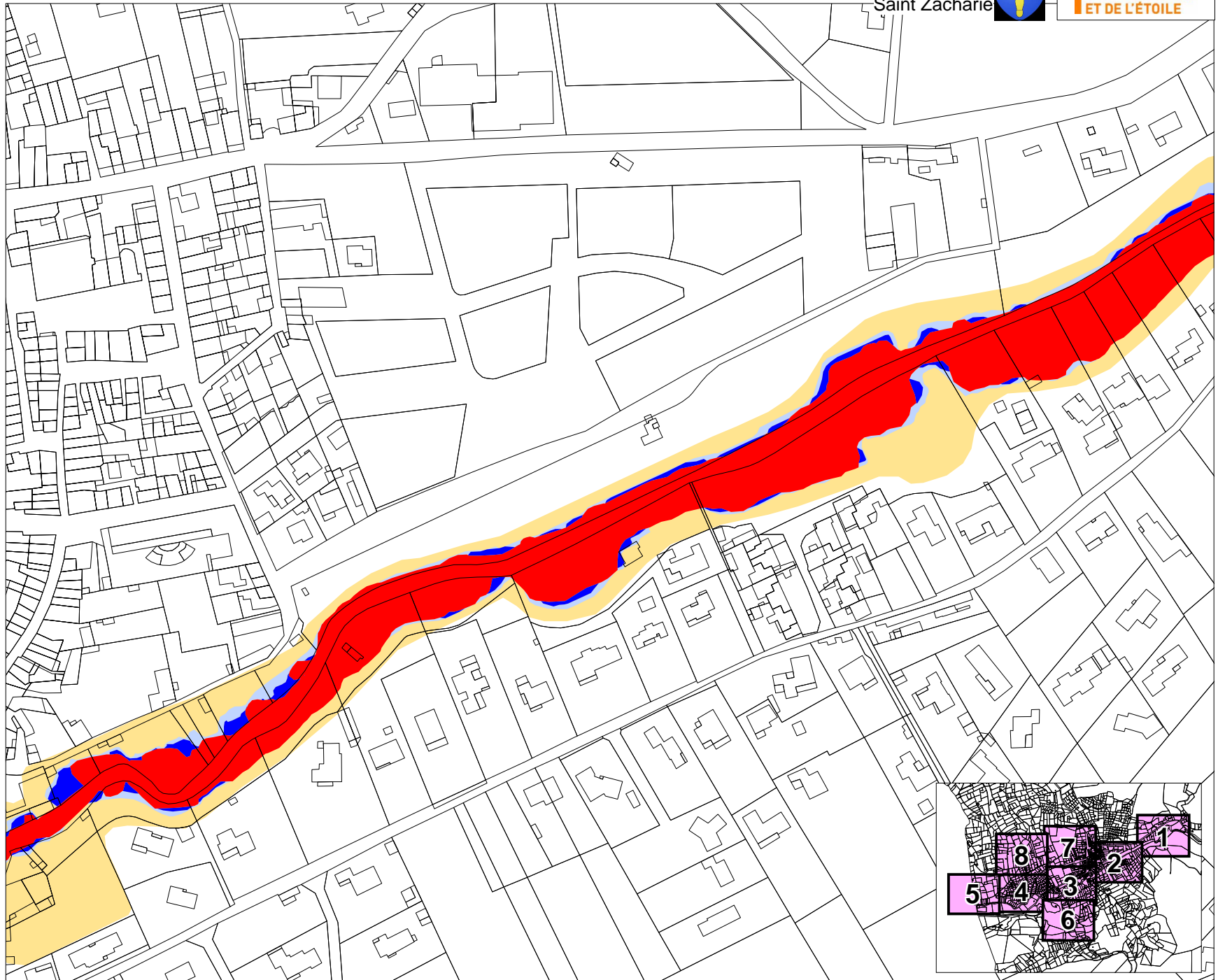
● Lit hydrogeomorphologique



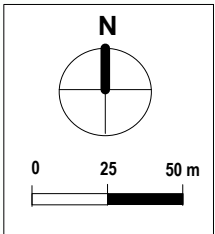
Aléa
inondation

Crue
centennale

Figure A2



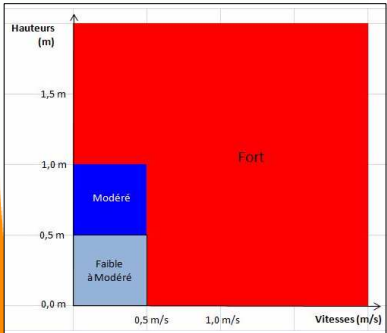
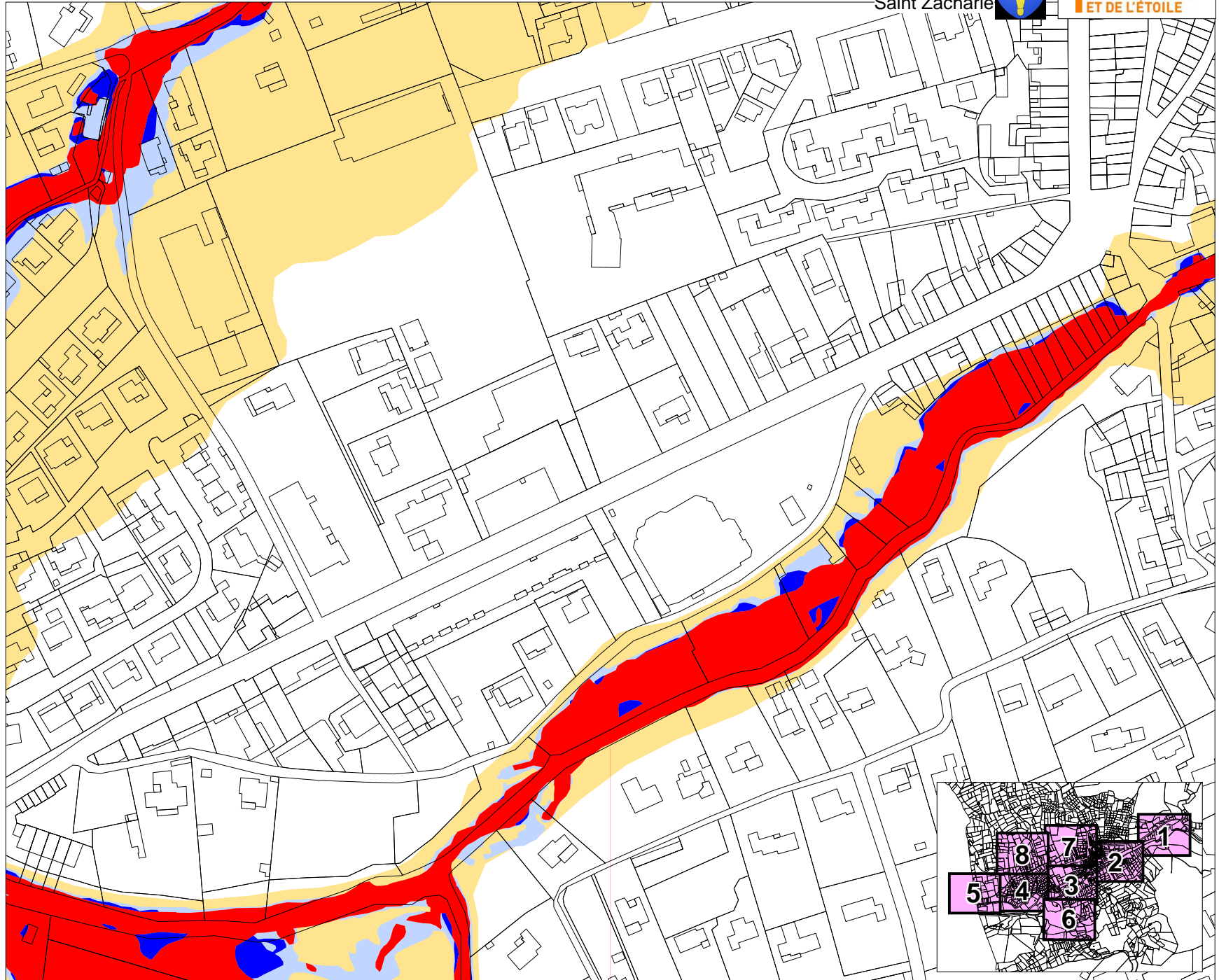
 Lit hydrogeomorphologique



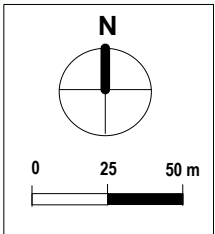
Aléa inondation

Crue centennale

Figure A3



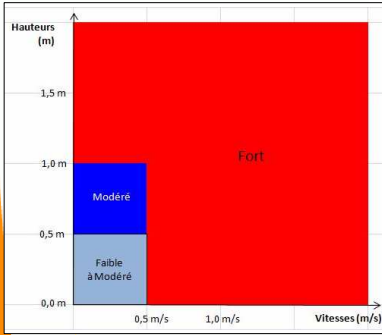
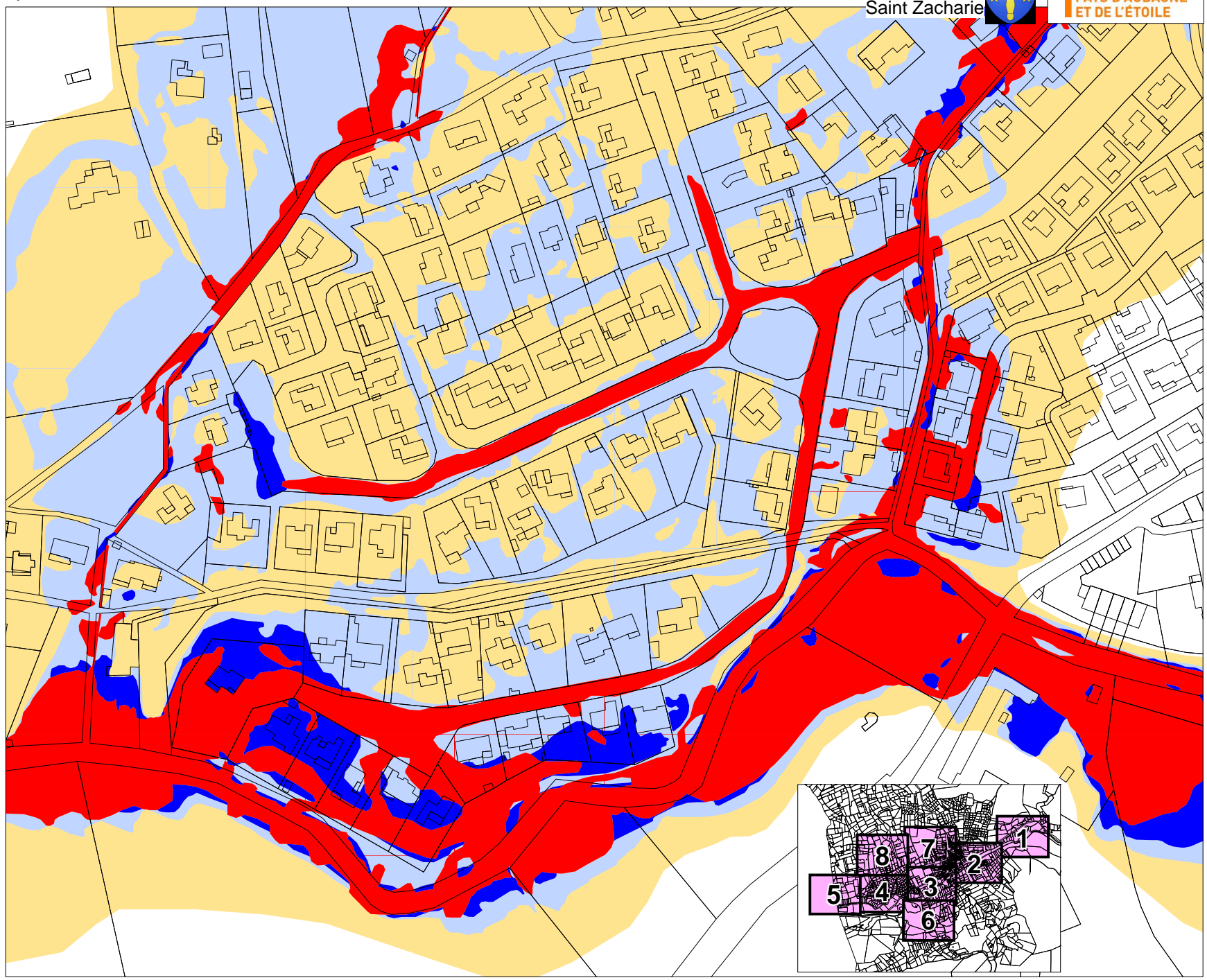
● Lit hydrogeomorphologique



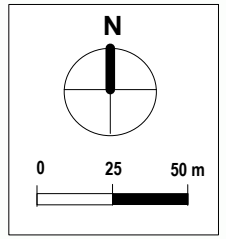
Aléa inondation

Crue centennale

Figure A4



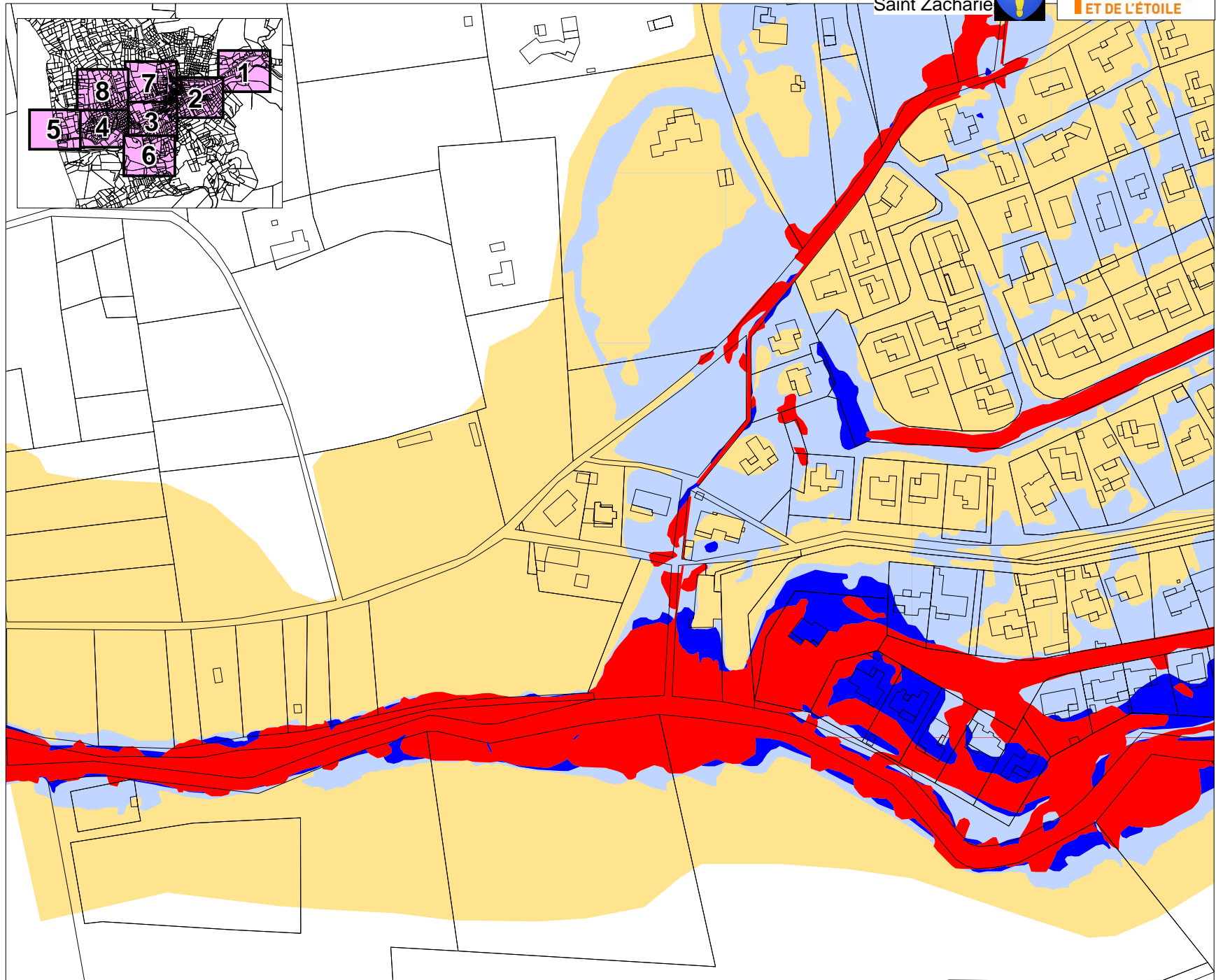
Lit hydrogeomorphologique



Aléa inondation

Crue centennale

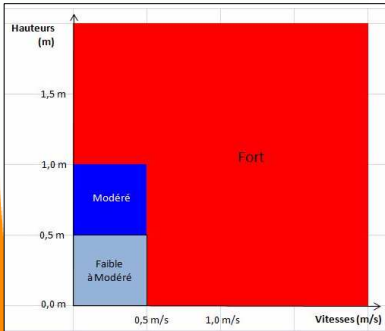
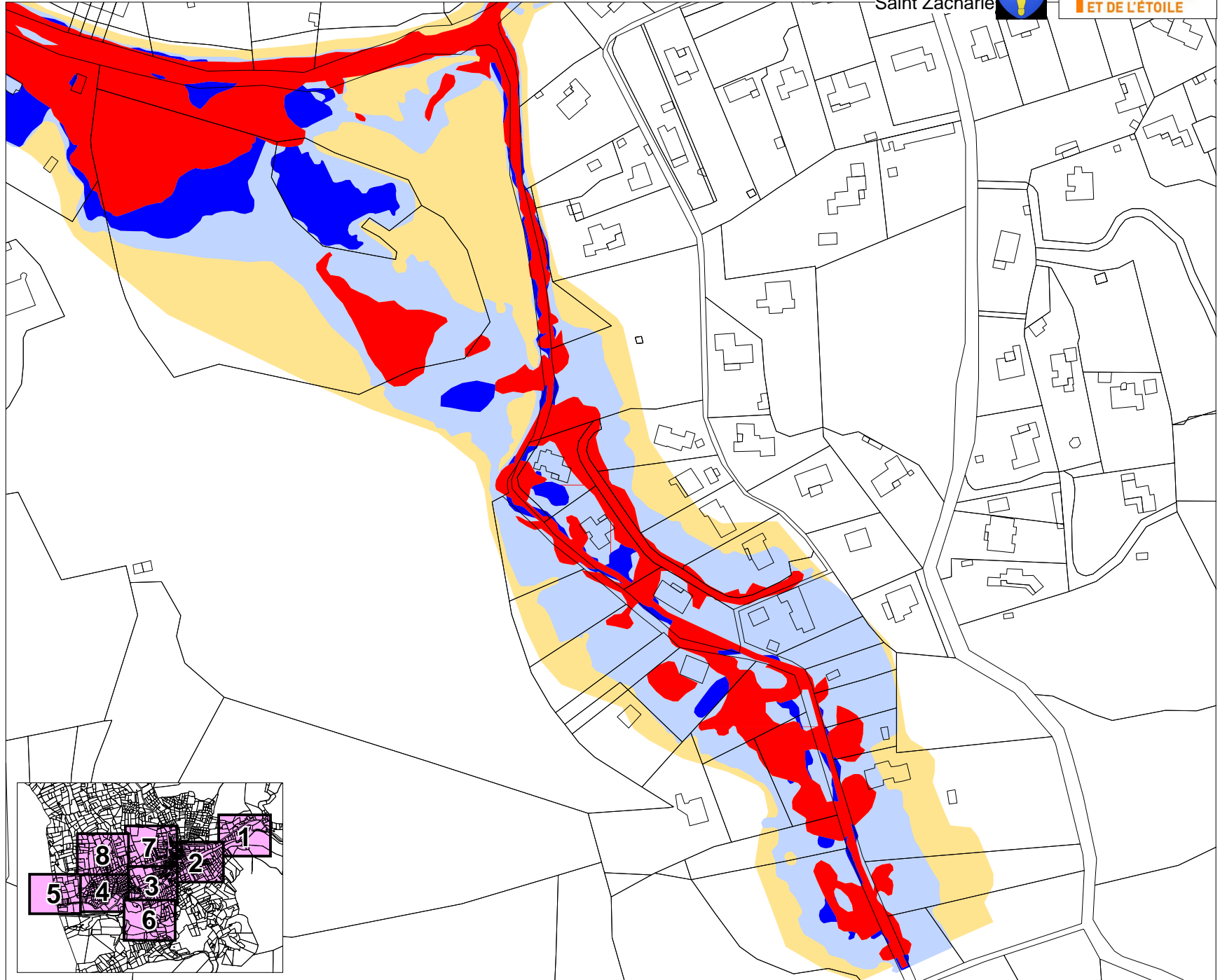
Figure A5



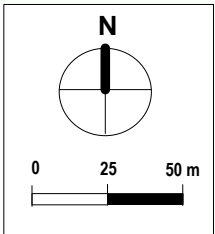
Aléa inondation

Crue centennale

Figure A6



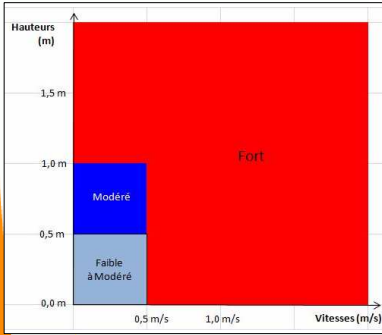
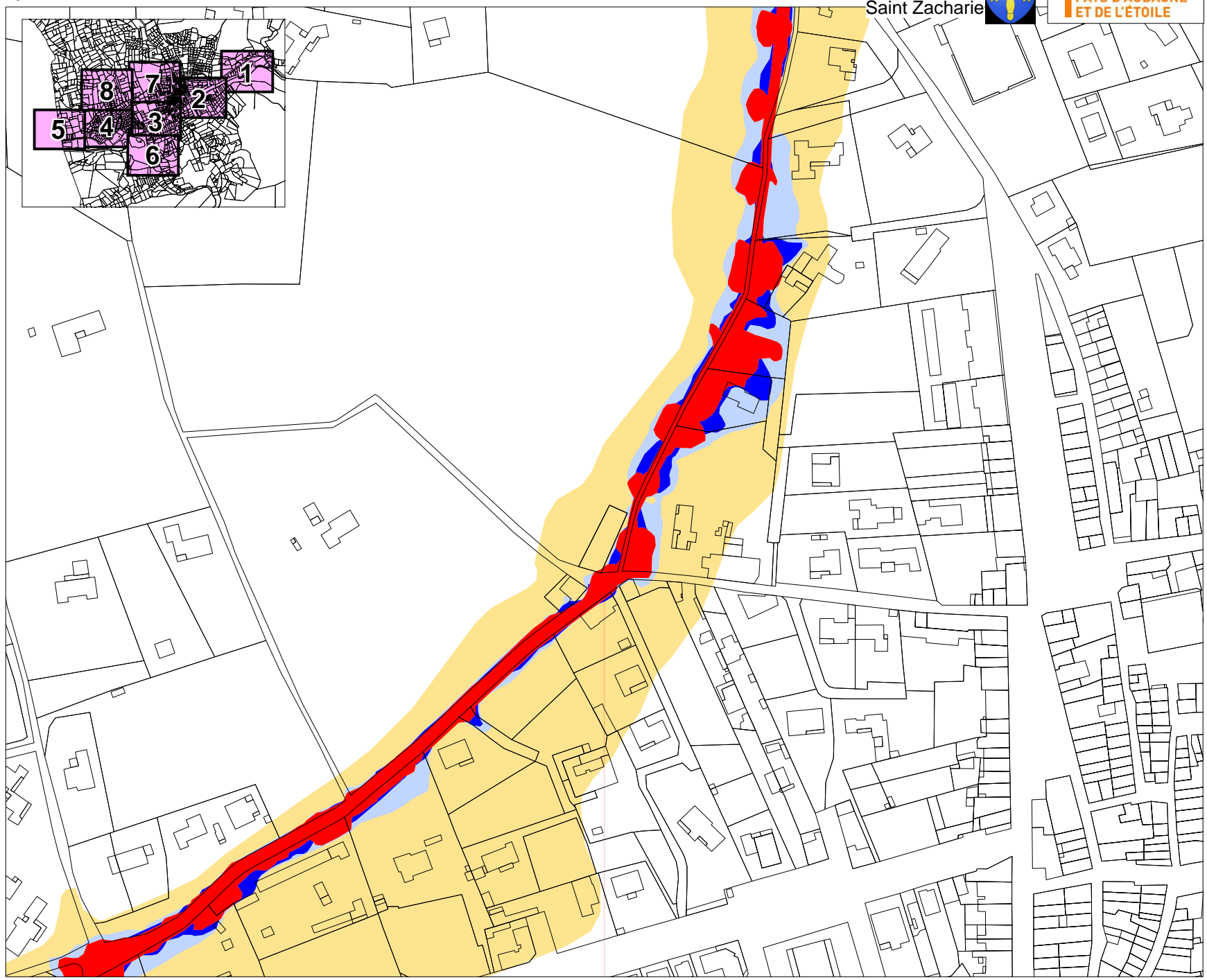
Lit hydrogeomorphologique



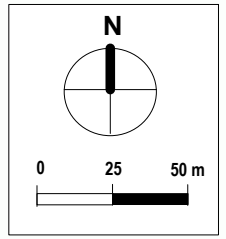
Aléa inondation

Crue centennale

Figure A7



● Lit hydrogeomorphologique



Aléa inondation

Crue centennale

Figure A8

